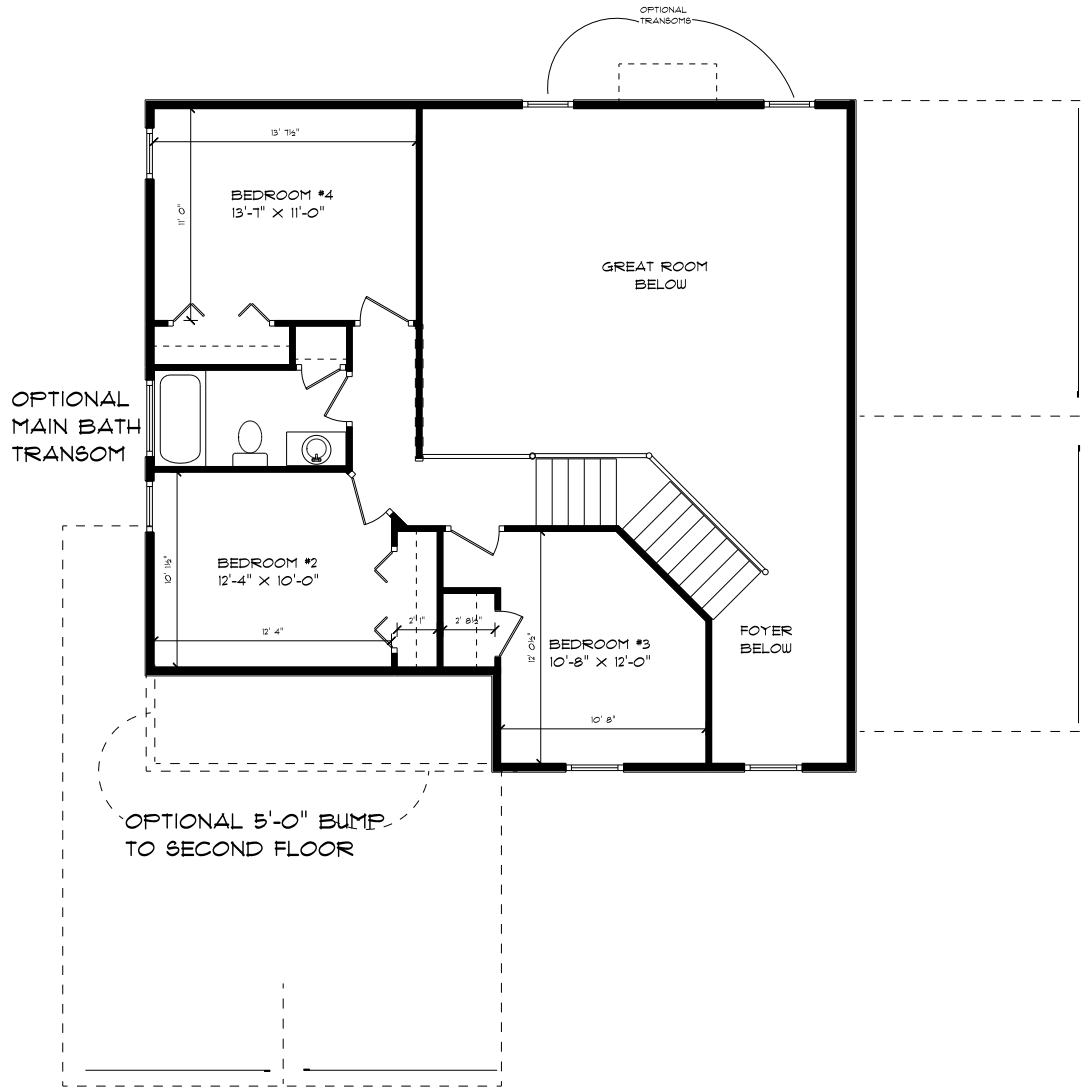


13'-4 0

10:19 AM

April 29, 2009



### THE LYNDEN "A"

UNMISTAKABLY PREMIER HOMES RESERVES THE RIGHT TO MAKE CHANGES, WITHOUT NOTICE OR OBLIGATION. RENDERINGS AND SPECIFICATIONS PRESENTED ARE FOR ILLUSTRATIVE PURPOSES ONLY AND ARE NOT PART OF A LEGAL CONTRACT. BUILDER RESERVES THE RIGHT TO MODIFY OR CHANGE FLOOR PLANS, DIMENSIONS, SPECIFICATIONS, FEATURES, AND PRICES. IT IS RECOMMENDED THAT THE ARCHITECTURAL BLUEPRINTS BE REVIEWED FOR FURTHER CLARIFICATION OF FEATURES AS ALL FEATURES MAY NOT NECESSARILY BE SHOWN. PLEASE ASK SALES REPRESENTATIVE FOR COMPLETE INFORMATION.



## THE LYNDEN SERIES SECOND FLOOR PLAN



EQUAL HOUSING  
OPPORTUNITY